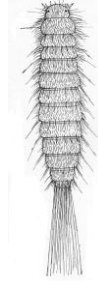




COMMAND PEST CONTROL

Information sheet number 26 - Two spot carpet beetle (fur beetle)



Appearance:

4.5 to 7mm, adult shiny black with a clear white marking on each wing case of white hairs at the base of the prothorax, short clubbed antennae. Larvae are dark brown, slender, shiny and tapering and have a distinct tuft of hairs that project backwards.

Breeding:

50 to 100 eggs laid, these hatch after 3 weeks, the larvae moult 6 to 20 times, they are 1.5 mm when hatched and 12 mm when full grown, the larval period is 9-26 weeks. Pupation is within the last larval skin; it is pale yellowish in colour. The adult beetle hatches after 3 to 20 days. Adults live for about 11 weeks. The entire life cycle is 4-21 weeks depending on temperature. The optimum temperature is 30°C.

Food:

Any high protein animal materials often found in stored grain and cereals and dry vegetable products. Its presence is often evident from cast larval skins found amongst its foodstuffs. It is common in fleeces and in tanneries in materials pre and post processing. This beetle feeds on pollen as an adult and enters buildings in the spring seeking suitable larval feeding sites. The principal food is keratin contained in carpets and clothing. It is often discovered in cupboards or in storage areas containing dried stuffed animals, birds, animal skins and furs.

Where do Two spot carpet beetles live?

Often in flourmills and provender mills, warehouses and meat processing premises. Also found in domestic situations and where fabric and textiles are prepared. Common in tanneries and skin handling premises.

Damage:

They normally damage, carpets, wool fabric dried stuffed animals, birds, animal skins and furs.

For more advice and control recommendations contact us on 01787 248049