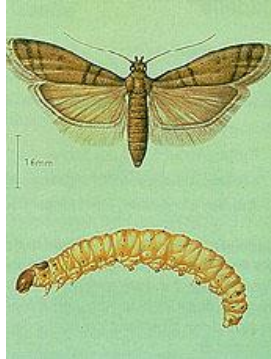




## COMMAND PEST CONTROL

### Information sheet number 50 - Warehouse (Cocoa) moth



#### **Appearance:**

The warehouse, tobacco or cocoa moth is smaller at 8-10mm, but similar to the flour moth. The forewings are grey with two lighter bands and are bordered by black scales. The larvae are creamy white and can grow to 10mm

#### **Breeding:**

Eggs are laid over or near the products. The larvae are mobile over products or bags, where they feed and produced silk which may form large webs. When completely grown, they leave the products and migrate to pupate. Adults are short lived and do not feed. They are active at night and usually fly towards the structure's roofing. They live for 13 to 14 days and a female may lay 279 eggs

#### **Food:**

Nuts, almonds, cocoa beans and dried fruit (it is a major pest and also damages flours, milled cereal products, cocoa, etc). It is therefore a very serious pest problem in the chocolate industry. The moths nearly always reach the factory in the raw materials. In addition, the remains of cocoa beans and other materials may be seats of infection, including the machinery itself.

#### **Where do Warehouse moths live?**

Warehouses, in raw materials especially from overseas, it is the principle pest in post harvest cocoa and in confectionery production / storage premises.

#### **Damage:**

The larvae contaminates products with silk and frass and is significant as a foreign body in food for retail sales. This moth can infest a wide range of cereal, vegetable, seed, and tobacco products.

**For more advice and control recommendations contact us on 01787 248049**