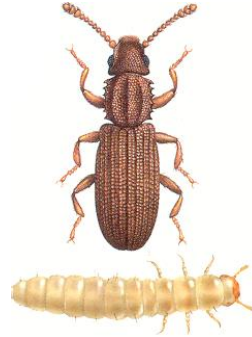




COMMAND PEST CONTROL

Information sheet number 42 - Saw Toothed Grain Beetle



Appearance:

2.5 to 3.5 mm, Dark rusty brown, long narrow flattened, 6 teeth on edges of prothorax, 3 ridges on centre of prothorax, antennae with club ends, almost identical to Merchant Grain Beetle (*O. mercator*), distinguished by the head and thorax shape

Breeding:

150 eggs laid loose in foodstuffs, they hatch in 7-10 days, The newly hatched larvae are 0.9 mm long. They are yellowish white with dark brown flecks and have a brown head. The larvae feed for 6-10 weeks, larvae moult 4 times, the larvae are 3mm when full grown. The cocoon is made up with food particles in which they pupate. Following pupation the adults hatch after 1-3 weeks, life cycle can be 9 weeks. The lowest temperature for breeding is 18°C. The beetle can live up to 3 years. Optimum conditions are 35°C and 90 % RH.

Food:

Grains and grain products, seeds, nuts, processed foods, dried soups, dried fruit and sugar.

Where do Saw toothed grain beetles live?

Warehouses, silos, mills, food processing factories and in stored grain. The principle grain pest in the UK.

Damage:

They will infest stored food causing spoilage and often seen as a foreign body contaminant.

For more advice and control recommendations contact us on 01787 248049