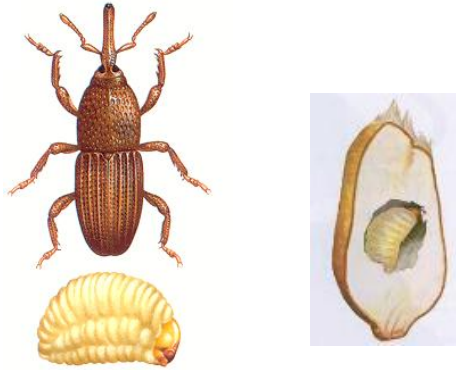




COMMAND PEST CONTROL

Information sheet number 44 - Grain weevil



Appearance:

3 to 4 mm long, red-brown, with a slightly curved proboscis or snout, elbowed antennae are set on this snout, oval punctures are evident on the thorax, it has longitudinally-grooved wing covers.

Breeding:

Eggs deposited singly in a small hole made in grain which is then plugged with saliva, 200-350 eggs are laid over 9 months at 2-3 a day, at 20°C the eggs hatch in 8-11 days, the legless larvae feeds on the endosperm, the life cycle is 8 to 16 weeks depending on the RH, 75 % is preferred. Grain with a moisture content of at least 9.5% is necessary for breeding. The larvae moults 4 times, after pupation the adult hatches 1 to 3 weeks later boring its way out of the grain. Only one larva develops in small grains like wheat or rice but larger grains such as maize might support the development of more. The beetle lives for approx. 6-9 months. The larvae can survive at least 10 weeks at 5°C. Development will not occur below 15°C.

Food:

Wheat, rye, maize, barley, millet and rice.

Where do Grain weevils live?

An important grain storage pest, found in flourmills, health food manufacturers, various brewing industries. The adult sometimes feigns death when disturbed.

Damage:

They will infest stored food causing much damage to grains. They are often unseen and are normally seen when holes are discovered in grain.

For more advice and control recommendations contact us on 01787 248049