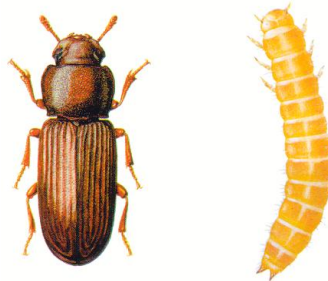




## COMMAND PEST CONTROL

### Information sheet number 45 - The Confused Flour Beetle



#### **Appearance:**

3 to 4 mm, uniform red brown to dark brown, slim with segments of antennae gradually broader towards tip, no ridges above each eye. Very similar to the rust-red flour beetle.

#### **Breeding:**

350-400 eggs are laid at 2 to 10 a day over 100 days in food material, the egg hatches in 6-14 days, larvae take 4 to 5 weeks to develop, with 5-11 moults over 3-9 weeks, pupae are formed and adults hatch in 9-17 days. Adults live 15 to 20 months. There may be up to 5 generations per year

#### **Food:**

Flour, cereal products, grain, oats, rice bran, nuts, dried fruit, spices and chocolate.

#### **Where do Confused flour beetles live?**

Found throughout the food industry possibly in any premises handling or storing flour. Flour mills, bakeries, silos favoured. This is a very common pest species and along with the rust-red flour beetle (*Tribolium castaneum*) is possibly one of the most reported insects in the food industry.

#### **Damage:**

They will infest stored food causing much damage to the product and they spoil flour by taint. As a foreign body their presence can cause product rejection and possible litigation or expensive recall.

**For more advice and control recommendations contact us on 01787 248049**