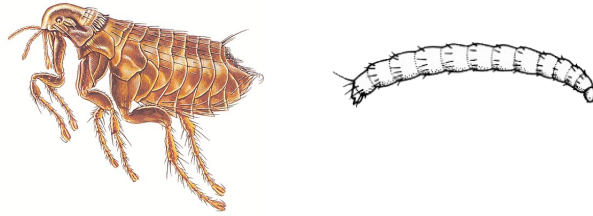




## COMMAND PEST CONTROL

### Information sheet number 39 - The Cat Flea



#### **Appearance:**

2-3mm long and brown eggs are 0.5mm long oval and pearly white  
4-8 eggs are laid after blood meal, 1000 in lifetime. Eggs hatch after 10 days.  
Flea larvae are 1.5mm long and threadlike.

#### **Breeding:**

Development is 8-150 days depending on temperature but usually 2-3 weeks.  
They moult twice growing to 5mm long and have 13 segments. When full grown  
the larva spins a cocoon, pupation can last months to years

#### **Food:**

Animal and human blood, whilst the larva eats flea droppings and regurgitated  
food and small insects, mites and organic debris.

#### **Where do Fleas live?**

Often around pets and their bedding, sometimes in disused premises which have  
been vacated by pets.

#### **Diseases:**

No disease is carried by fleas in the U.K but they can cause serious anxiety and the  
bites can sometimes become infected if scratched.

#### **Control:**

This has to be a thorough approach, pets, bedding, carpets, vacuuming and use of  
contact insecticide and IGR's. Treatment of adult fleas on pets (this is the owner's  
responsibility)

Treatment has to be the control larvae, pupae and eggs especially around carpet  
edges, under chair cushions etc. The vacuuming of floors is also important  
especially prior to treatment.

**For more advice and control recommendations contact us on 01787 248049**