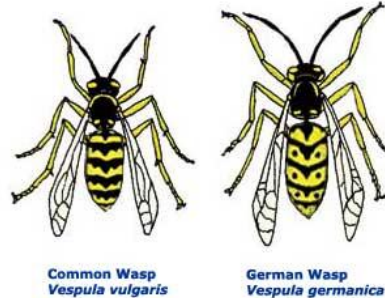




COMMAND PEST CONTROL

Information sheet number 30 – The Common / German wasp



Appearance:

10 to 20 mm, narrow waist, distinctive banding in bright yellow and black, 2 pairs of membranous wings. Both wasps are very similar to look at.

Breeding:

Queens emerge in April and are active until November. Nest construction is similar in both species. New queens over-winter in outbuildings, attics, etc. Nests are often in the same location every year but old nests are not used, new ones are built.

Food:

Its principle food preference is soft-bodied insects, caterpillars and flies. The adults visit flowers and take nectar. They visit orchards in the autumn to feed from ripened and fallen fruit. They become sugar frenzied in late summer and into the Autumn.

Where do Wasps live?

Any type of building and usually close to human habitations. They favour orchards and will nest in homes, business premises and outbuildings as well as earth banks, around tree roots and sometimes shrubs.

Diseases:

No disease is passed to man but it is a can be aggressive insect in defence of its nest - it often stings humans if trapped inside clothing or in defence.

Damage:

They will infest cake and confectionery production / retail outlets. They will also spoil fruit in orchards. They can be a major hazard in sugar, jam and fruit juice factories and are a pest in beer gardens and on the beach.

For more advice and control recommendations contact us on 01787 248049